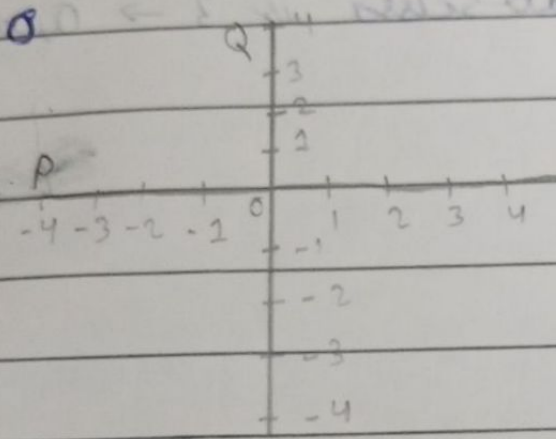


*

Ans 1 100 lies on x
-100 lies on y

Ans 2 0



Ans 3

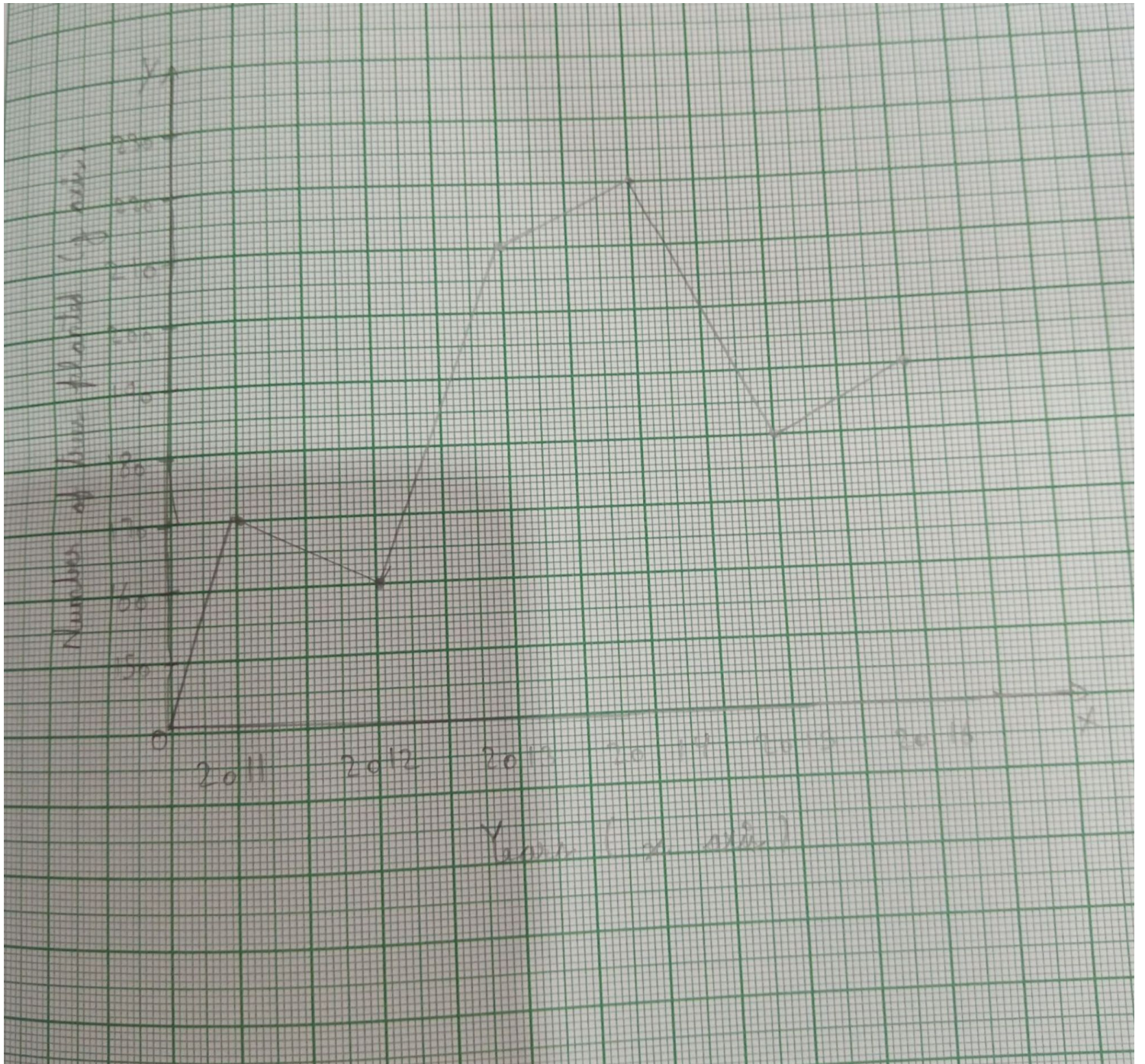
Distance between them = 8

- Ans 4 (4, 2) → Quadrant 1
- (-3, 5) → Quadrant 2
- (-2, -5) → Quadrant 3
- (4, -2) → Quadrant 4

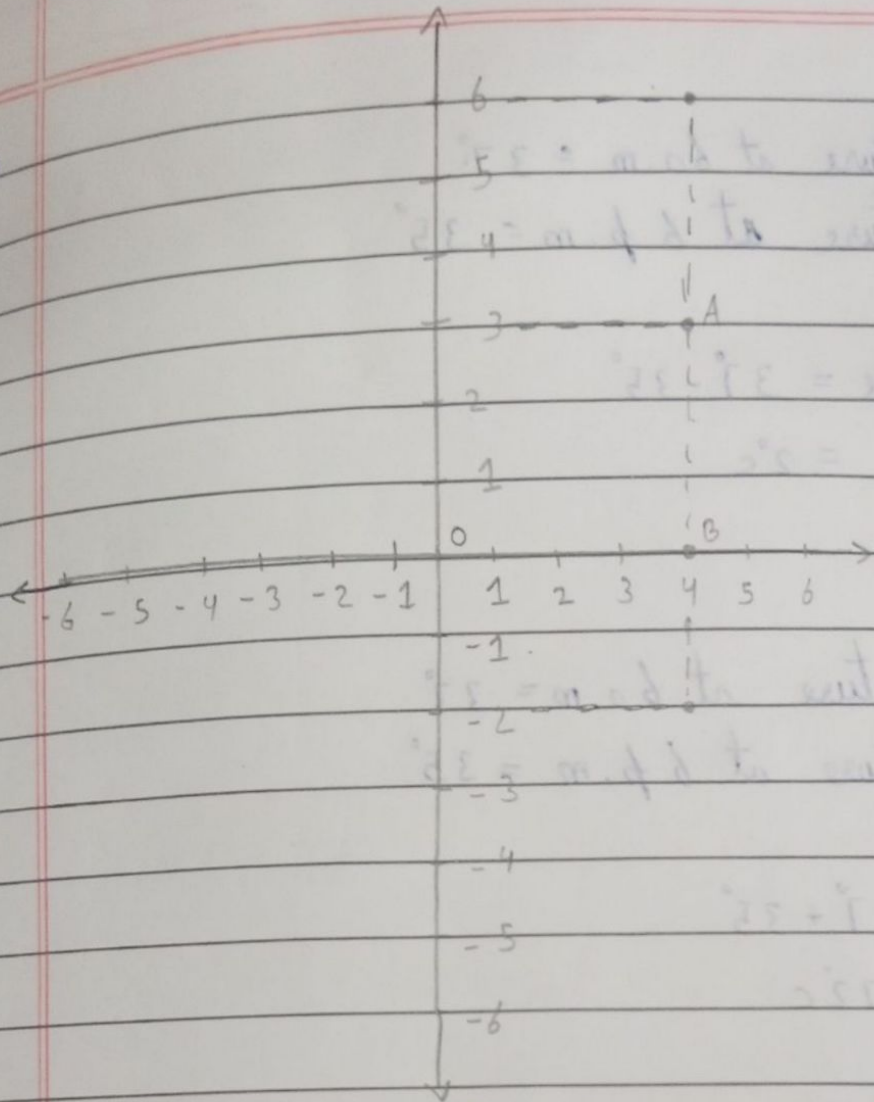
- Ans 5 (-2, 4) → Quadrant 2
- (3, -1) → Quadrant 4
- (-4, 0) → x axis
- (2, 3) → Quadrant 1

Ans 7

- Ordinate is 5 abscissa is -3 \rightarrow Quadrant 2
- abscissa is -5 and the ordinat is -3 \rightarrow Quadrant 3
- abscissa is -5 and ordinate is 3 \rightarrow Quadrant 2
- Ordinat is 5 and abscissas is 3 \rightarrow Quadrant 1



Ans 9



Yes, they all lie on same line

Ans 10

1

Ans At 10 a.m the temperature was maximum and it was at 4°C .

2

Ans $4^{\circ} + 38^{\circ} + \cancel{36^{\circ}} + 36^{\circ}$

3

Mean = 38°C

3

Ans

Temperature at 6 a.m = 37°

Temperature at 6 p.m = 35°

$$\begin{aligned}\text{Difference} &= 37^{\circ} - 35^{\circ} \\ &= 2^{\circ}\text{C}\end{aligned}$$

4

Ans

Temperature at 6 a.m = 37°

Temperature at 6 p.m = 35°

$$\begin{aligned}\text{Sum} &= 37^{\circ} + 35^{\circ} \\ &= 72^{\circ}\text{C}\end{aligned}$$

Ans 11

i

True

ii

False, because 2nd coordinate represents y axis

iii

True

iv

True