

**Course & Test Series**

---

 **CBSE**

---

 **ICSE**

---

 **NTSE**

---

 **Banking & Insurance**

---

 **Central Govt. Service**

---

 **State Govt. Services**

---

 **LAW Entrance**

---

 **MBA Entrance**

---

 **Railways & Metro Services**

---

**...many more**

**abhyasonline.in**

## Making Calculator using Developer Tab in Power Point

### Microsoft Power Point

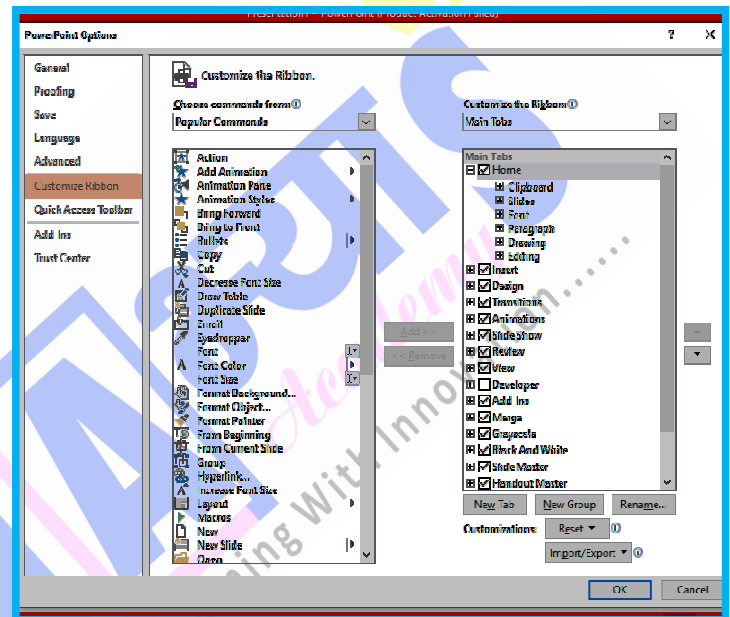
### Module 34 - Making Calculator using Developer Tab in Power Point

#### How to enable Developer Tab in PowerPoint?

To enable the Developer tab in PowerPoint, go to File > Options > Customize Ribbon, then check the "Developer" box under Main Tabs. This will add the Developer tab to the ribbon, allowing you to access tools like VBA (Visual Basic for Applications) and add-ins.

#### Detailed Steps:

- Open PowerPoint: Launch the PowerPoint application.
- Navigate to Options: Click the "File" tab in the top left corner, then select "Options" from the menu.
- Customize the Ribbon: In the PowerPoint Options window, click on "Customize Ribbon" in the left-hand panel.
- Enable Developer: Under "Customize the Ribbon" in the right-hand panel, scroll down to the "Main Tabs" section and check the box next to "Developer".
- Confirm and Close: Click "OK" to close the PowerPoint Options window.
- Access the Developer Tab: The Developer tab will now be visible on the ribbon, providing access to tools for creating and managing macros, VBA code, VBA code.



#### Why do we use Developer Tab in PowerPoint?

We use the Developer tab in PowerPoint to access advanced tools and features that are not available on the standard ribbon. It is mainly used by power users, educators, programmers, or anyone who wants more control over interactive and custom content in presentations.

**Course  
&  
Test Series**

**Making Calculator using Developer Tab in Power Point**

To Insert Interactive Controls:

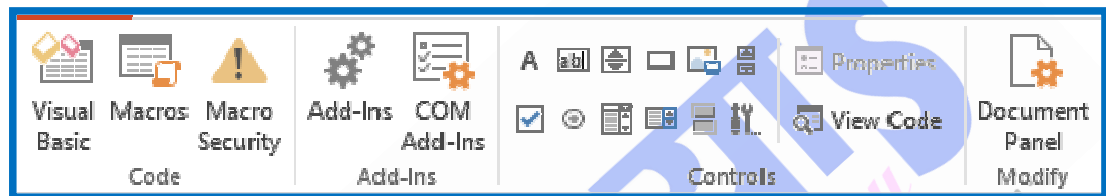
- Add elements like buttons, checkboxes, combo boxes, etc.
- Useful for creating quizzes, forms, or interactive slides.

To Write and Run Macros (Automation):

- Automate repetitive tasks using VBA (Visual Basic for Applications).
- Example: Automatically generate a slide with a specific format.

To Access and Edit VBA Code:

- Open the Visual Basic Editor to write or modify code behind slides.
- Used for custom functionality like slide timers, auto-navigation, etc.



Step-by-Step: Make a Calculator in PowerPoint using VBA

**Step 1: Enable Developer Tab**

- Go to File > Options > Customize Ribbon.
- Check Developer.
- Click OK.

**Step 2: Insert a Slide for Calculator**

- Add a blank slide where you want the calculator.

**Step 3: Insert Text Boxes (for input and result)**

- Go to Developer > Insert > Text Box (ActiveX Control).
- Insert 3 label.
- First Number input
- Second Number input
- Result output

Blank

 **CBSE**

Blank

 **ICSE**

Blank

 **NTSE**

Blank

 **Banking & Insurance**

Blank

 **Central Govt. Service**

Blank

 **State Govt. Services**

Blank

 **LAW Entrance**

Blank

 **MBA Entrance**

Blank

 **Railways & Metro Services**

**...many more**

**abhyasonline.in**

**Course  
&  
Test Series**

 **CBSE**

 **ICSE**

 **NTSE**

 **Banking &  
Insurance**

 **Central Govt.  
Service**

 **State Govt.  
Services**

 **LAW  
Entrance**

 **MBA  
Entrance**

 **Railways & Metro  
Services**

**...many more**

**abhyasonline.in**

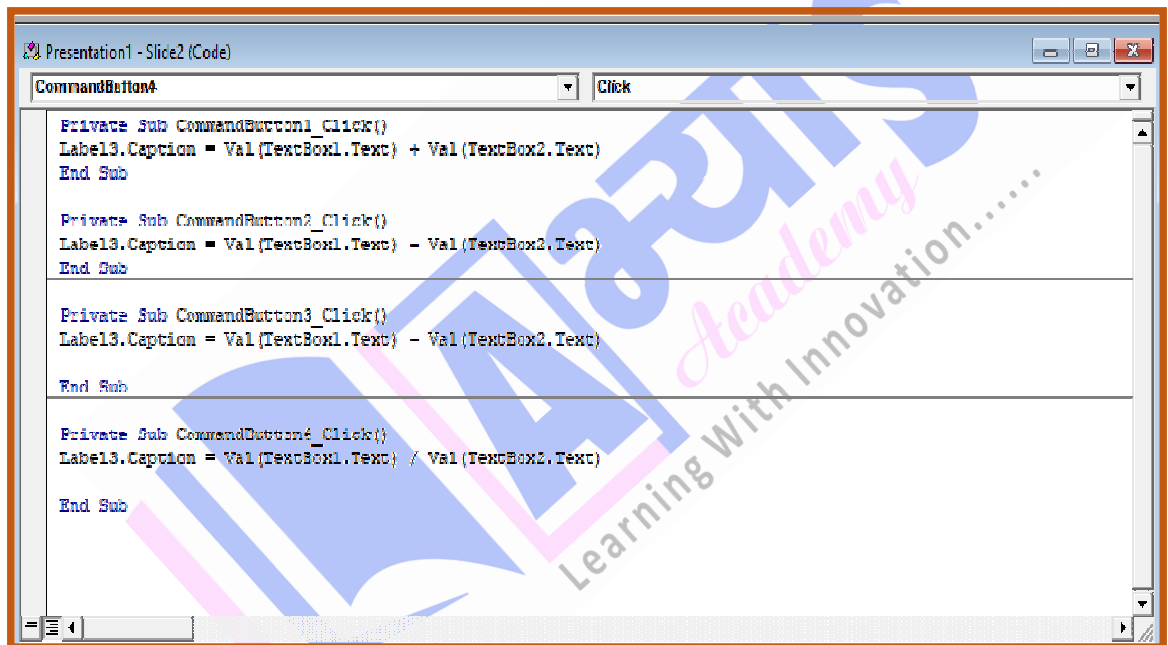
**Making Calculator using Developer Tab in Power Point**

**Step 4: Insert Buttons**

- Go to Developer > Insert > Command Button (ActiveX Control).
- Insert 4 Buttons, and right-click each → Properties → Change the Caption:
- +
- -
- ×
- ÷

**Step 5: Write VBA Code**

- Press ALT + F11 to open the VBA editor.
- In the left panel, double-click the slide (e.g., Slide1).
- Paste this sample code:



```

Presentation1 - Slide2 (Code)
CommandButton4 Click
Private Sub CommandButton1_Click()
Label13.Caption = Val(TextBox1.Text) + Val(TextBox2.Text)
End Sub

Private Sub CommandButton2_Click()
Label13.Caption = Val(TextBox1.Text) - Val(TextBox2.Text)
End Sub

Private Sub CommandButton3_Click()
Label13.Caption = Val(TextBox1.Text) * Val(TextBox2.Text)
End Sub

Private Sub CommandButton4_Click()
Label13.Caption = Val(TextBox1.Text) / Val(TextBox2.Text)
End Sub
    
```

**Text Box:**

An input field where the user can type or enter text or numbers.

**Label:**

A non-editable text element used to display static text or instructions on a form or slide.

**Command Button:**

A clickable button that performs an action or runs code when pressed.

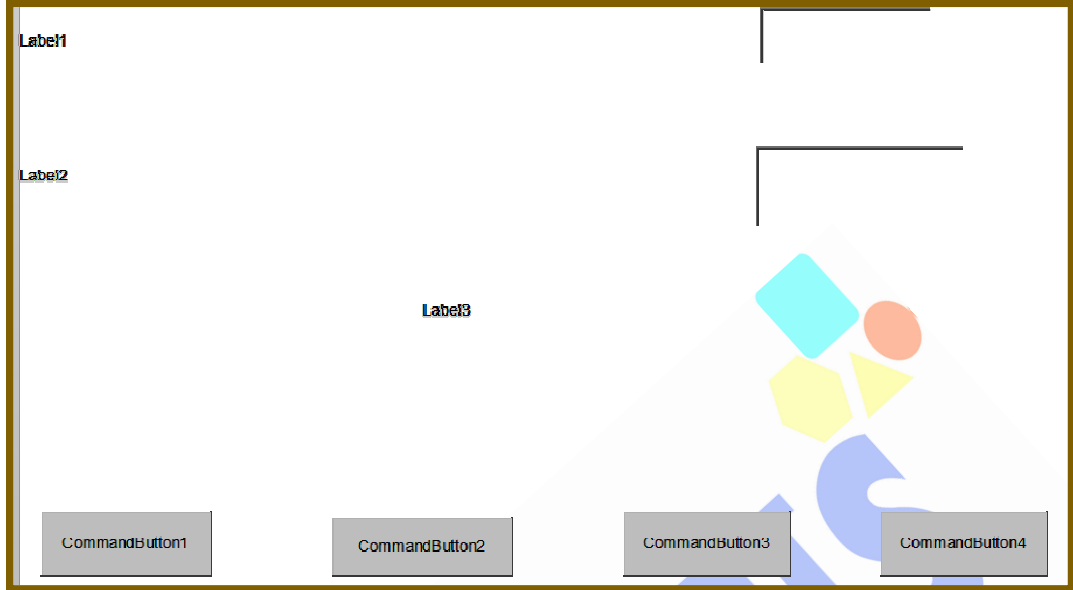
**Course & Test Series**

-  **CBSE**
-  **ICSE**
-  **NTSE**
-  **Banking & Insurance**
-  **Central Govt. Service**
-  **State Govt. Services**
-  **LAW Entrance**
-  **MBA Entrance**
-  **Railways & Metro Services**
- ...many more**

**abhyasonline.in**

**Making Calculator using Developer Tab in Power Point**

**Calculator Format in PowerPoint**



**Change the Caption (Button Text):**

This is what users see on the button.

- Make sure you're in Normal view, not Slide Show mode.
- Right-click the Command Button.
- Click "Command Button Object"..
- Change it to what you want, like:
  - "Add"
  - "Multiply"
  - "Calculate"
  - "="

