

**Course
&
Test Series**

Adding Timings to Animations on a Slide in Power Point

Microsoft Power Point

Module 29 - Adding Timings to Animations on a Slide in Power Point



CBSE

Animations

In PowerPoint, animation refers to adding visual movement or special effects to objects on a slide, making your presentation more engaging and dynamic. These effects can be applied to text, images, shapes, and other elements to draw attention and guide the audience's focus.



ICSE

How do you use timing in animation?

Using timing in PowerPoint animations enhances your presentation by controlling the flow and engagement.



NTSE

1. Show One Thing at a Time: Timing lets you display information step by step, so your audience focuses on one point at a time without getting overwhelmed.
2. Keep Your Audience Interested: Well-timed animations can make your presentation more dynamic, capturing and retaining the audience's attention.
3. Match Your Speech: By aligning animations with your speech, you ensure that visual elements complement your verbal message, leading to a more cohesive and professional delivery.



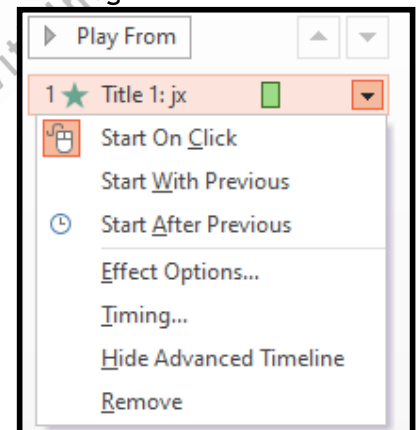
Banking & Insurance

On Click: The animation starts when you click the mouse during a slide show.



Central Govt. Service

With Previous: The animation starts at the same time as the animation effect listed directly above it in the Animation Pane.



State Govt. Services

After Previous: The animation starts immediately after the animation effect listed directly above it in the Animation Pane finishes.



LAW Entrance

Delay:

You can add a pause before an animation effect begins, allowing you to control the flow of your presentation.



MBA Entrance

Duration:

You can adjust how long the animation effect takes to play.



Railways & Metro Services

Preview:

...many more

abhyasonline.in



**Course
&
Test Series**

 **CBSE**

 **ICSE**

 **NTSE**

 **Banking &
Insurance**

 **Central Govt.
Service**

 **State Govt.
Services**

 **LAW
Entrance**

 **MBA
Entrance**

 **Railways & Metro
Services**

...many more

abhyasonline.in

Adding Timings to Animations on a Slide in Power Point

The Animation Pane includes a preview function that allows you to see how all the animations on the slide will play together.

Timing in animation

It refers to the duration of an action within an animation sequence, influencing how an audience perceives the speed, weight, and emotion of an action. It's a fundamental principle used to convey meaning and create believable and engaging animation.

Text animation

Text animation is about taking regular words or text and making them move, change, or appear in a way that's visually interesting.

Effect

In PowerPoint, "Effects" in animations refer to the fine-tuned adjustments you can make to how your text or objects animate. These effects are accessible through the "Effect Options" button or via the Animation Pane, and they vary depending on the animation type.

Timing

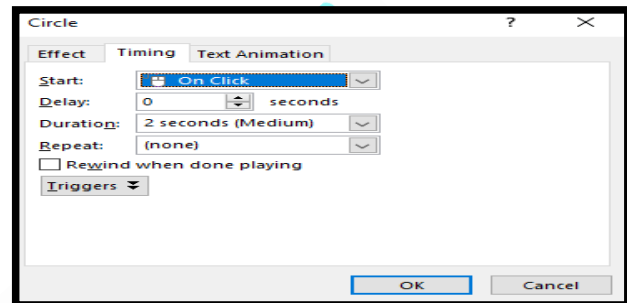
Timing in PowerPoint animations controls when and how fast your animations play. It's super useful for syncing text, images, or shapes with your speech or other media like music or videos.

Importance of Timing in Animation

Timing in animation refers to the number of frames or the speed at which an action occurs. It's one of the most essential principles that gives life, meaning, and realism to animated motion.

- Timing controls how characters move, react, and express themselves.
- Helps simulate realistic motion—like gravity, weight, and momentum.
- Timing adds character. A slow, deliberate movement shows calm or sadness.
- A fast, snappy movement shows excitement, fear, or anger.
- Makes characters feel unique and believable.

Example: A bowling ball and a balloon bounce very differently—because of timing.



**Course
&
Test Series**

 **CBSE**

 **ICSE**

 **NTSE**

 **Banking &
Insurance**

 **Central Govt.
Service**

 **State Govt.
Services**

 **LAW
Entrance**

 **MBA
Entrance**

 **Railways & Metro
Services**

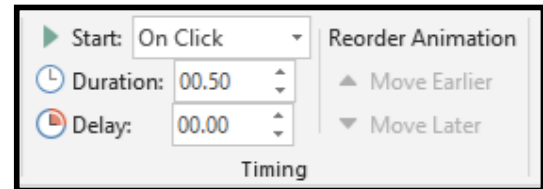
...many more

abhyasonline.in



Adding Timings to Animations on a Slide in Power Point

Steps to Add Timings to Animations:

1. Select the Object
 - Click on the text box, image, or shape you want to animate.
2. Apply an Animation
 - Go to the Animations tab on the ribbon. (Pick an effect like Fade, Fly In, etc.)
3. Open the Animation Pane
 - Click Animation Pane to see all animations on the slide.
 - You'll see a list on the right.
4. Set the Start Option
 - Click on your animation in the list.
 - At the top, choose one of these:
 - On Click - starts when you click
 - With Previous - starts at the same time as the one before
 - After Previous - starts after the one before finishes
5. Set Duration and Delay
 - In the Timing group, set:
 - Duration - how long the animation takes (e.g. 2.00 seconds)
 - Delay - how long to wait before starting (e.g. 0.50 seconds)
6. Preview
 - Click Preview (on the left of the Animations tab) to see how it looks.



How to Reorder Animations in PowerPoint

- ✓ Steps:
 1. Go to the Animations tab
 2. Click Animation Pane
 - A panel will appear on the right showing all the animations on your slide in the order they play.
 3. Select the Animation You Want to Move
 - Click on the animation in the list.
 4. Use the Up/Down Arrows to Reorder
 - At these top of the Animation Pane, click:
 -  Move Earlier (to move up in the sequence)
 -  Move Later (to move down in the sequence)

